

www.Tenafly94Oak.com



94 Oak Street | Tenafly 07670

www.anateisenberg.com
201.341.4765



www.Tenafly94Oak.com



94 Oak Street | Tenafly 07670

www.anateisenberg.com
201.341.4765



94 Oak St | Tenafly NJ
www.Tenafly94Oak.com

First Floor



TEAM
EISENBERG

201.341.4765

kw TOWN LIFE
KELLERWILLIAMS, REALTY

Anat: 201.341.4765
Eran: 201.390.8854



94 Oak St | Tenafly NJ
www.Tenafly94Oak.com

Second Floor



TEAM
EISENBERG

201.341.4765

kw TOWN LIFE
KELLERWILLIAMS. REALTY

Anat: 201.341.4765
Eran: 201.390.8854



94 Oak St | Tenafly NJ
www.Tenafly94Oak.com

Lower Floor



TEAM
EISENBERG

201.341.4765

kw TOWN LIFE
KELLERWILLIAMS, REALTY

Anat: 201.341.4765
Eran: 201.390.8854





Exterior Features

- Exterior – Masonry Stucco and stone
- Windows – **Andersen, black exterior trim, white interior.**
- Garage – 2 cars with one door electric openers.
- Roof – lifetime warranty GAF Timberline Lifetime Architectural Roofing Shingles.
- Driveway – Asphalt with Belgian Blocks curb and apron.
- Deck –made of **Trax**
- Landscaping – Fully Sodded backyard and generous landscaping.
- Underground sprinkle system.
- Hose bibs – 2 exteriors; front and rear
- **Lot size: 12,430 sf**



Interior Features

- 6 Bedrooms
 - Master bedroom on the second floor.
 - 3 additional bedrooms in second floor.
 - 1 bedroom on the first floor.
 - 1 bedroom in the basement.
- 5 1/2 Bathrooms
 - 3 bathrooms in second floor
 - 1 bathroom in the basement.
 - 1 bathroom on the first floor.
 - 1 Powder room on first floor.
- **Laundry room on 2nd floor**
- **First floor total floor area 1966 sf**
- **Second floor total floor area – 1689 sf**
- **Basement total floor area – 1922 sf**
- **Garage** is 464 sf, 2 cars attached and **heated.**
- An open floor plan featuring a **2-story great room** open to a Chef's kitchen.
- **Entrance foyer with 9' ceiling**
- **First floor 9' ceiling**
- **Great room 18'-10" ceiling**
- **Second floor 8'-6" ceiling**
- **Basement 8' ceiling.**
- In The basement –
 - Large entertainment area.
 - **Home theater - Optional (carpet and speakers)**
 - Bedroom with bathroom.
 - **Gym with full wall mirror and rubberized floor**

Information provided by the builder and is deemed reliable but not guaranteed.

The builder reserves the right to make alterations to the plans, features, elevations at his own discretion.



Kitchen

- Cabinets
 - Custom made cabinetry.
 - boxes made from furniture grade.
 - Hinges have a soft-close feature built into the hinge; doors close softly and silently every time.
- Countertop Caesarstone or similar
- Three Sinks, one central sink, one in the island and one in the butler pantry.
- Appliances:
 - Refrigerator – Subzero built-in 48" side by side
 - Range Top – Wolf 36" Gas Stove- 6 Burners
 - Wall oven – Wolf 24" Built –in Wall Oven
 - Microwave – Wolf 24" Built-in Wall Drop Down Drawer
 - Dishwasher – Two Newest Model Bosch dishwashers.
 - Hood - 36" Built-in under cabinet hood
 - Wine cooler, XO undercounter in butler pantry

Flooring

Engineered floor 9 ½" wide - Entrance, living, dining, family and all bedrooms.

Tiles in all bathroom floors

Link floor in the basement

Woodwork and Doors

- Doors – One flat panel door. 8 feet door in first floor. 7 feet in other floors.
- Hinges – Chrome finish.

- Molding
 - Doors and windows casing – Metro collection, in the basement, first floor and second floor.
 - Base Molding – Metro collection, in the basement, first floor and second floor.
 - Crown Molding - Metro collection, in the first floor.
 - Wall panels and column

Bathrooms

All bathrooms will have radiant heated floors

- Master bathroom
 - Toilet - One-piece toilet.
 - Soaking Tub and floor mounted soaking tub filler
 - Large shower with a bench, Rain shower, Body jets and Hand shower.
 - Two vanities.
- Bathroom in the first floor with shower.
- J & J suite – Two vanities Bathroom with shower.
- One bathroom with soaking tub.
- Basement bathroom with shower.

Outdoor Living

- The property can fit a Swimming pool (not included in the price)
- Large, Trax deck off the family room

Information provided by the builder and is deemed reliable but not guaranteed.

The builder reserves the right to make alterations to the plans, features, elevations at his own discretion.

94 Oak Street | Tenafly NJ

Features Sheet

www.Tenafly94Oak.com

Anat: 201.341.4765 Eran: 201.390.8854
eisenberganat@gmail.com eisenberg1998@gmail.com



Amenities

- Gas fireplace - Heat & Glo in the great room
- Heating & cooling zones – 2 forced air zones
- Radiant heat on all first and second floors bathrooms.
- Heated garage.
- Full house generator - Generac Guardian 20kW Generator Smart home technology.
- **Nest** Wi-Fi Thermostat, Learning Thermostat. Programmable, Remote Programming, Learning Assistant support: Amazon Alexa, Google Assistant, Siri.
- **Ring** Video Doorbells let you answer the door from anywhere using your iOS or Android smartphone.
- **Yale/Nest** Smart Lock (Wi-Fi), Keyless deadbolt with remote access.
- Landscaping underground sprinkle system
- Hot water heater – 75 Gallon
- Electric service – 200 Amp
- Central vacuum
- Ethernet cabling in all room allowing for internet and TV connections.
- Smoke and Carbon Monoxide detectors as per code
- 10-year home builders' warranty

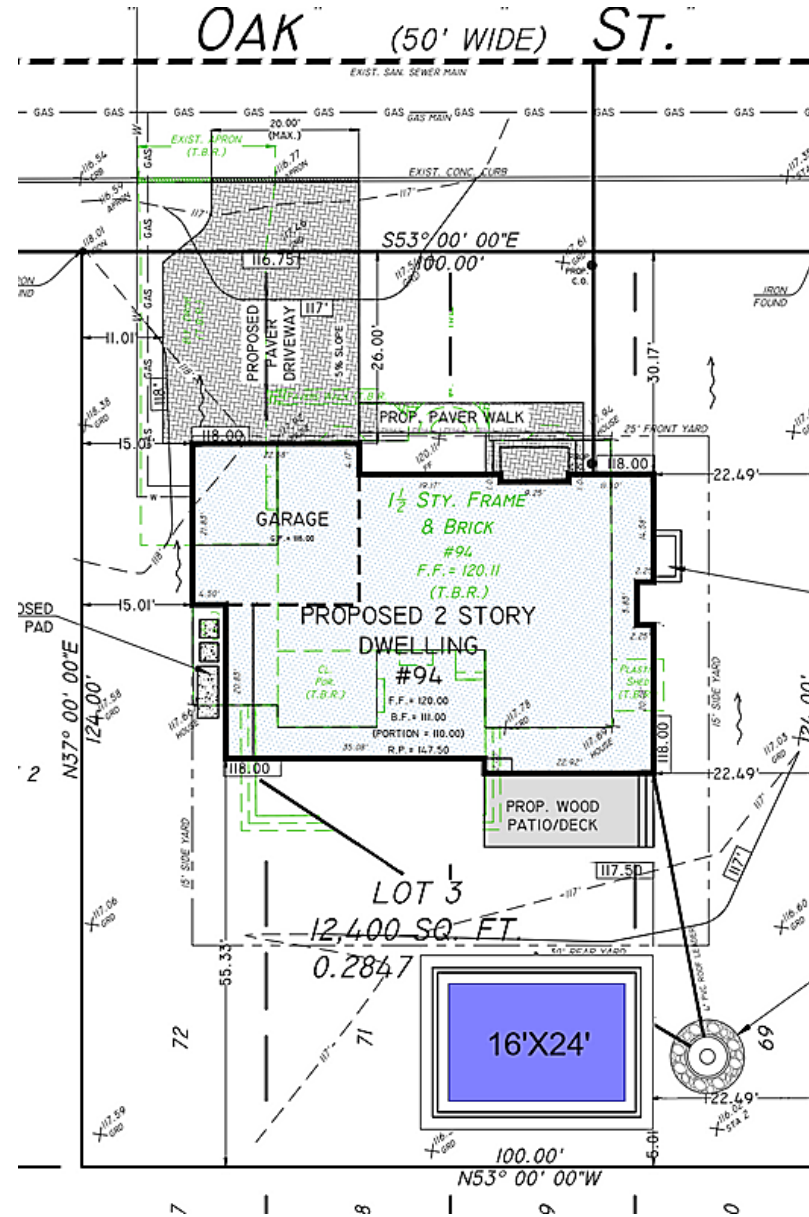


UPADTED: **March 15, 2021**

94 Oak St | Tenafly NJ

www.Tenafly94Oak.com

Site Plan With Pool

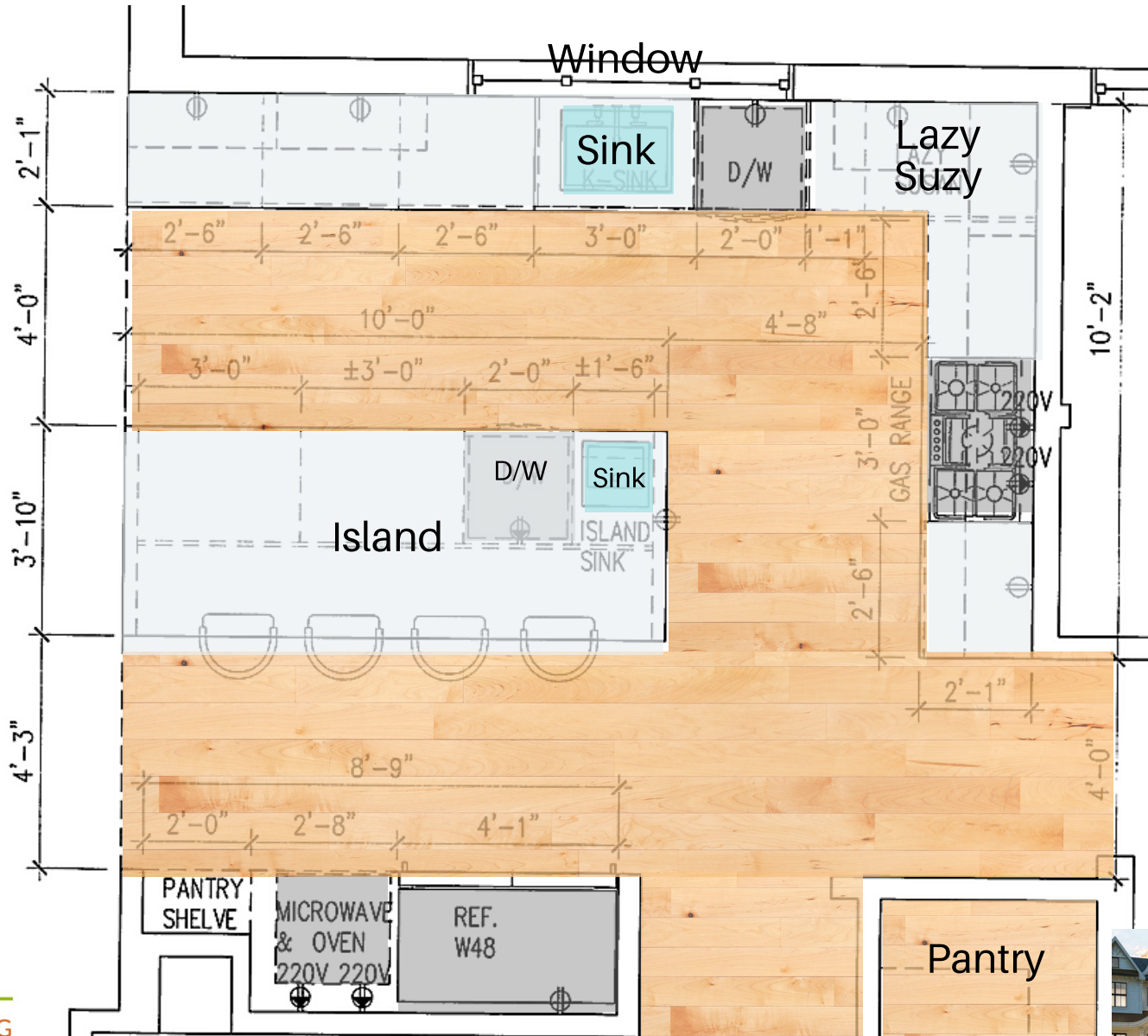


201.341.4765



Anat:201.341.4765
Eran:201.390.8854





201.341.4765

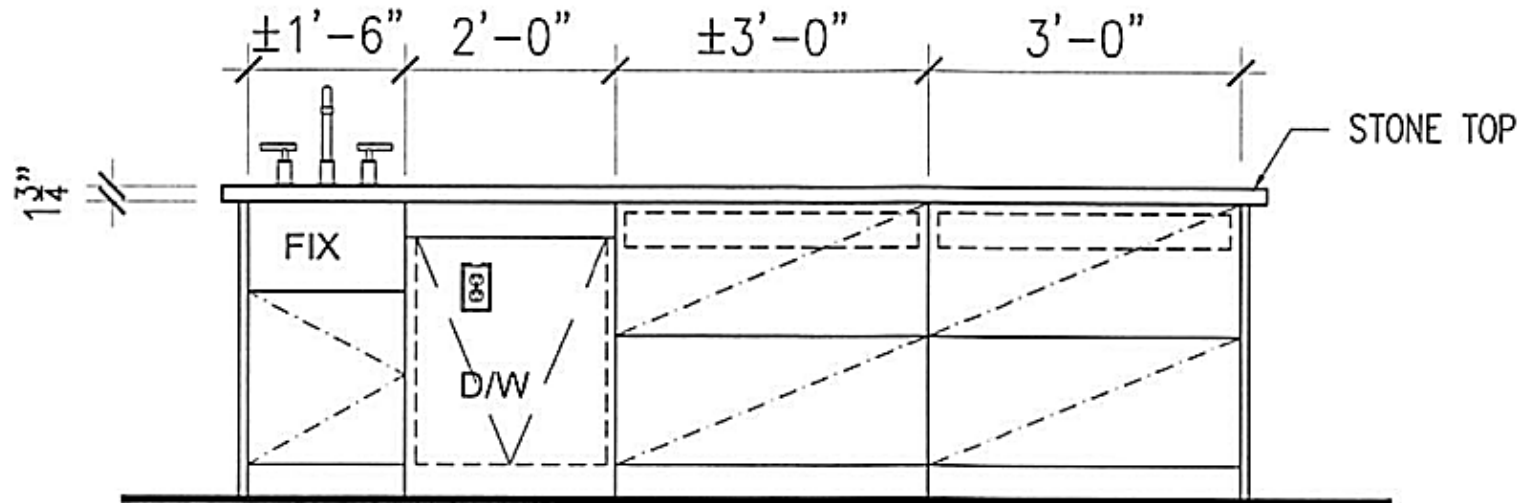


Anat:201.341.4765
Eran:201.390.8854



94 Oak St | Tenafly NJ
www.Tenafly94Oak.com

Kitchen Island
10' x 3'-10"



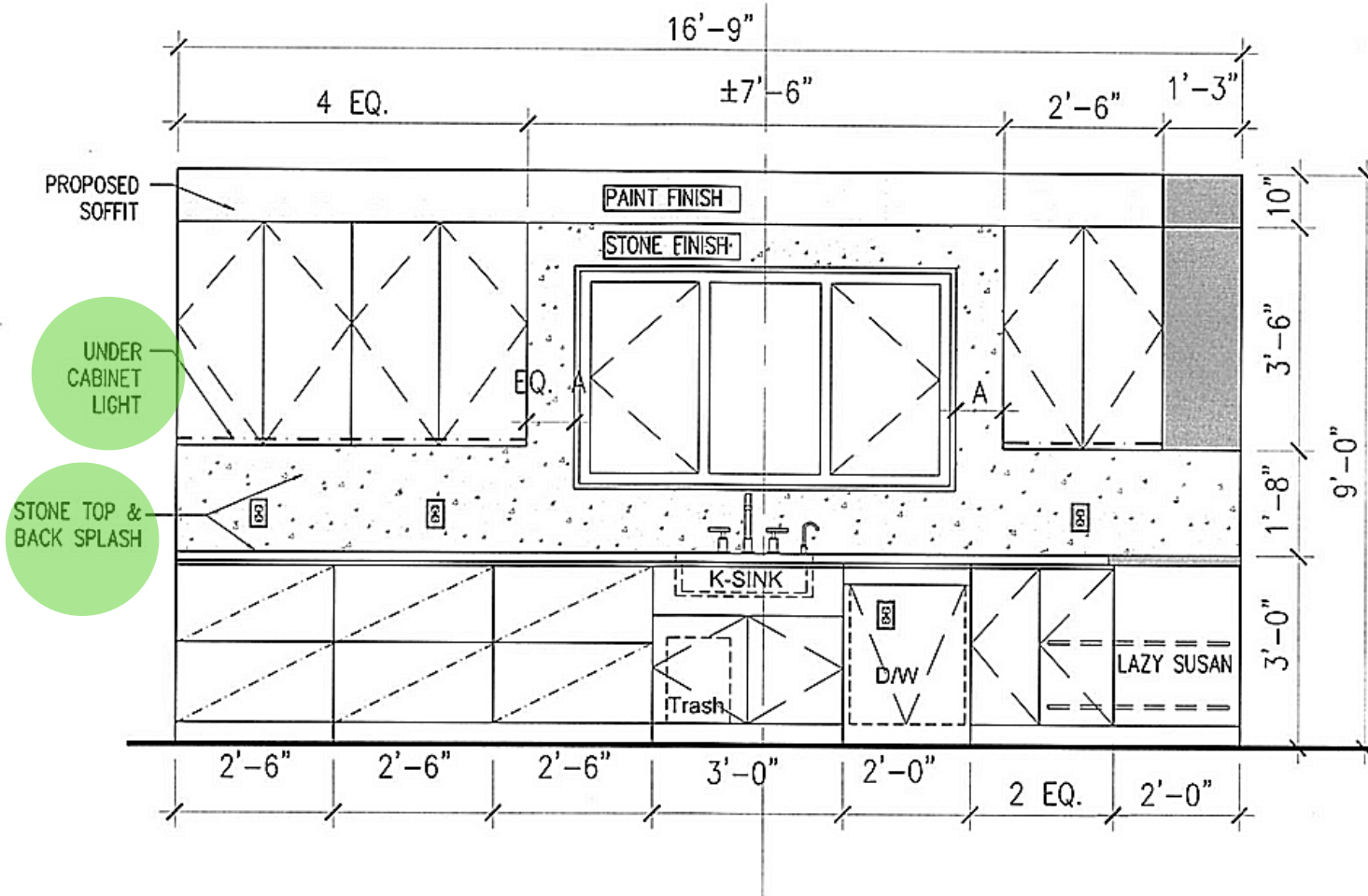
TEAM
EISENBERG

201.341.4765

kw TOWN LIFE
KELLERWILLIAMS. REALTY

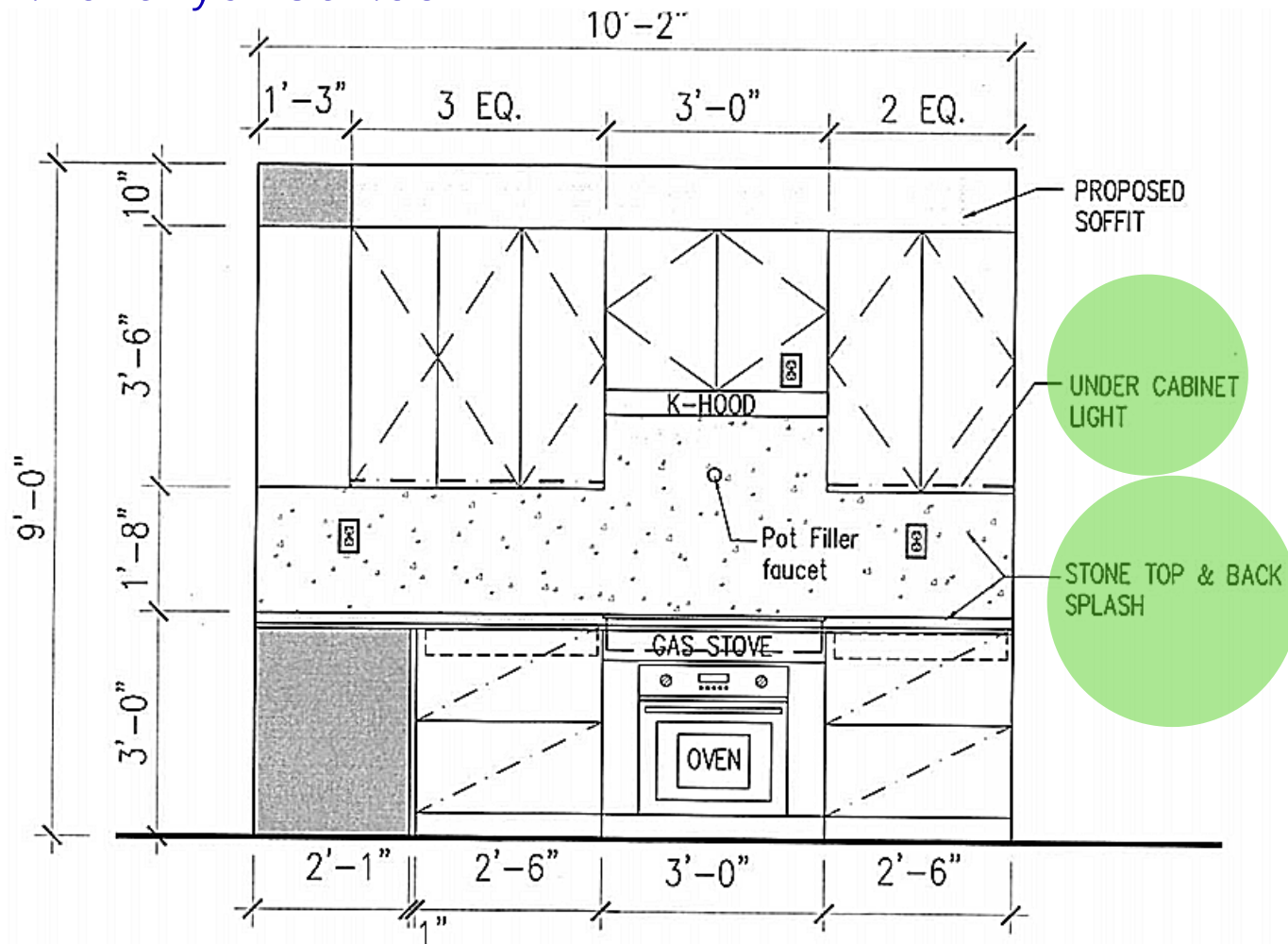
Anat: 201.341.4765
Eran: 201.390.8854





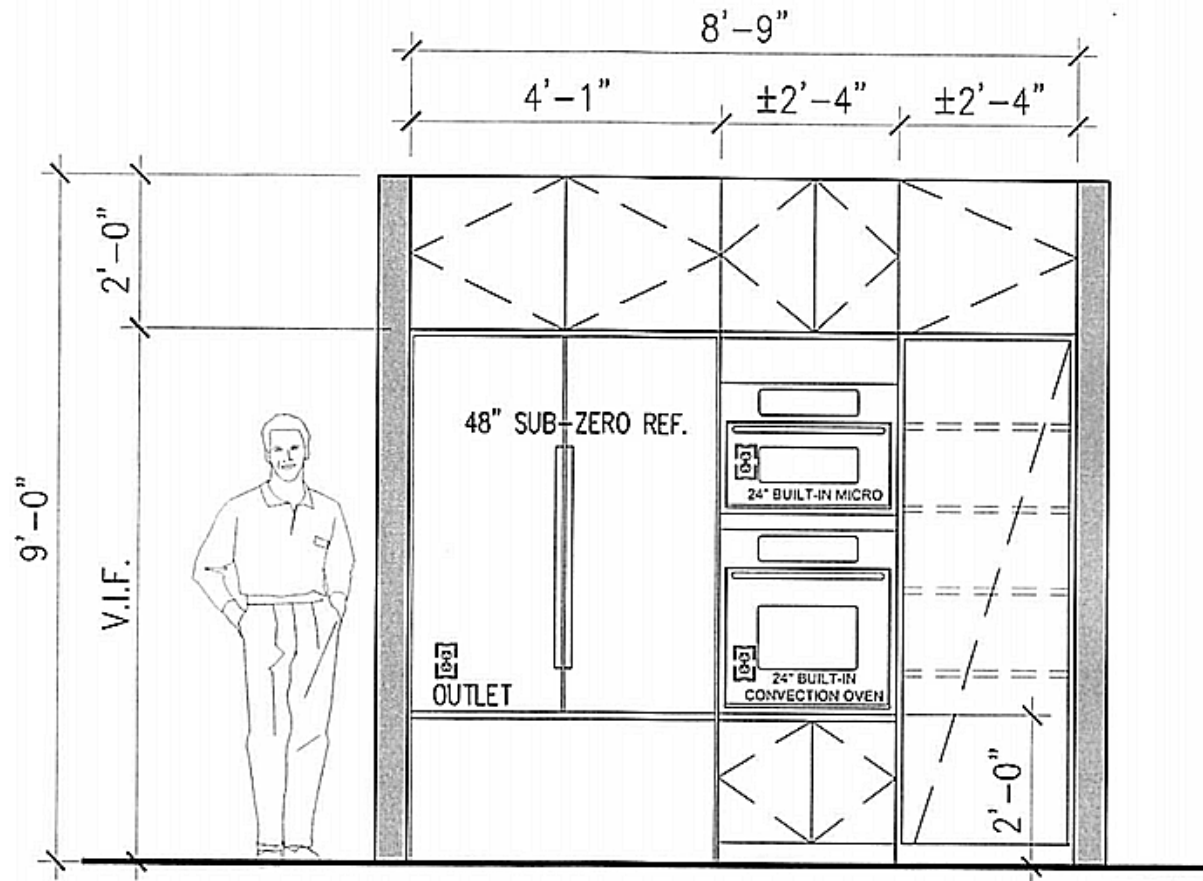
1 SK-1 KITCHEN ELEVATION W/ FULL UPPER CABINET
SCALE: 3/8" = 1'-0"





2
SK-1 KITCHEN ELEVATION @ HOOD
SCALE: 3/8" = 1'-0"





3 SK-1 KITCHEN ELEVATION @ REF. & OVEN
SCALE: 3/8" = 1'-0"

