



Anat Eisenberg & Team

www.anateisenberg
eisenberganat@gmail.com 201.341.4765



21 Day Ave – Tenafly NJ New Construction Specifications Sheet





21 Day Ave – Tenafly NJ
New Construction | KITCHEN





21 Day Ave – Tenafly NJ

New Construction Specifications Sheet

- The modern home design emphasizes clean lines and geometric shapes.
- Celebration of Natural Light.
- Open Floor Concept.
- Neutral Color Palette.

Exterior Features

- Exterior – a combination of Stucco tiles and Hardie.
- Windows – Andersen, black exterior, and black interior
- Entrance door – 8 feet high double door, modern design.
- Garage – 2 cars with 16 feet-wide metal coated doors and electric opener.
- Roof – Flat roof look with lifetime warranty GAF Timberline Lifetime Architectural Roofing Shingles.
- Driveway – Asphalt with Belgium blocks curb.
- Patio – Pavers
- Landscaping – Fully Sodded backyard and generous landscaping
- Underground sprinkler system.
- Hose bibs – 2 exteriors; front and rear.
- Lot size: 7,500 sf

Interior Features

• **5 Bedrooms**

- Master bedroom on the second floor
- Three additional bedrooms on the second floor
- One bedroom in the basement with a fire-escape window.

• **4 1/2 Bathrooms**

- master bathroom, one for the bedroom suite, and one "Jack & Jill".
- One powder room on the first floor
- One full bathroom in the basement

Information provided by the builder is deemed reliable but not guaranteed.

The builder reserves the right to make alterations to the plans, features, and elevations at his own discretion



21 Day Ave – Tenafly NJ

New Construction Specifications Sheet

- The **total floor** area is **4049 s.f.** including the basement.
- **First-floor** total floor area – **1283 s.f.**
- **Second-floor** total floor area – **1529 s.f.**
- **Basement** total floor area – **1237 s.f.**
- **The garage is 426 s.f.**
- Laundry room on the second floor with cabinets and sink.
- First floor 10' ceiling
- Second floor 8'-12' ceiling
- Basement 9' ceiling
- The basement has a large recreation area.

Kitchen

Cabinets

- Made in Italy cabinetry.
- Modern style doors painted dark gray and wood veneer.
- Cabinetry boxes made from furniture grade.
- Hinges have a soft-close feature built into the hinge; doors close softly and silently.
- Under-cabinets light
- Countertop, Quartz.
- An oversized island that can seat 4 people.
- Stainless steel Sink.
- Garbage disposal in the kitchen sink.

Appliances:

- Refrigerator – Sub Zero 48" Classic Side-by-Side Refrigerator/Freezer with Internal Dispenser
- Professional Range top – Bertazzoni 36-Inch with 6 burners.
- Wall oven – Bertazzoni 30 Inch
- Convection microwave – Bertazzoni 30 Inches



21 Day Ave – Tenafly NJ

New Construction Specifications Sheet

- Dishwasher – Bertazzoni
- Hood – Zephyr
- A wine cooler, Summit under-counter

Bathrooms

Master bathroom

- Toilet One-piece toilet.
- Soaking Tub and floor-mounted tub filler
- Large shower with a bench, Rain shower, Hand shower, and two body sprays.
- Double sink vanity.

Others

- Powder room on the first floor.
- Junior suite Bathroom with soaking tub.
- Jack and Jill's bathroom with double sink vanity and shower.
- Basement bathroom with shower.

Flooring

- Six inches wide engineered floors in the entrance, living, dining, family, and all bedrooms.
- Porcelanosa porcelain tiles on all bathroom floors
- LVP floor in the basement

Woodwork and Doors

- Modern interior trims and moldings throughout the house
- Doors – modern design doors.
- Hinges – Black or chrome finish
- Door Levers - Dexter by Solstice in Bright Chrome or black Schlage



Anat Eisenberg & Team

www.anateisenberg
eisenberganat@gmail.com 201.341.4765



21 Day Ave – Tenafly NJ

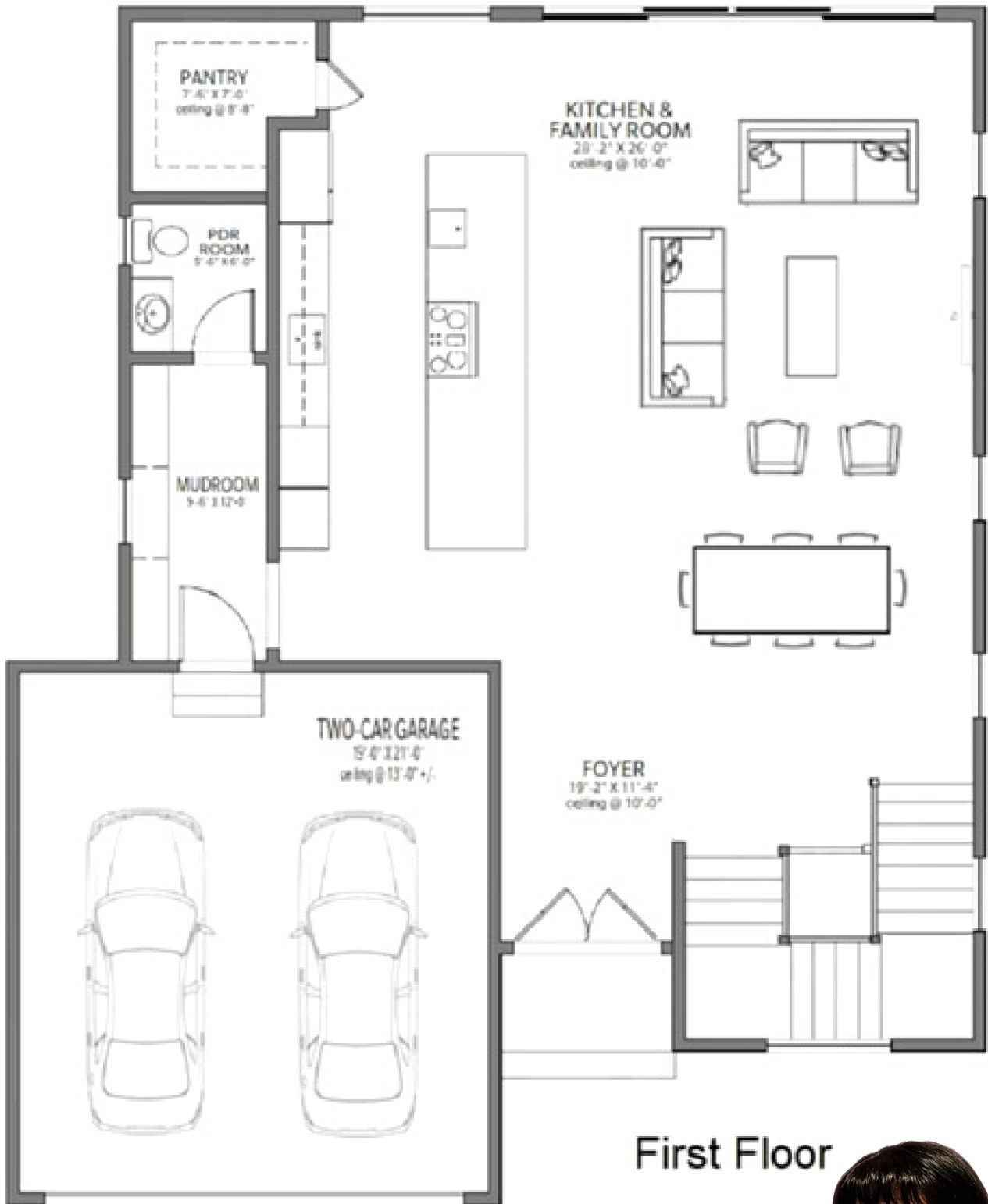
New Construction Specifications Sheet

Amenities

- Electric linear fireplace in the great room
- Heating & cooling zones – 2 forced air zones.
- Nest Wi-Fi Thermostat, Learning Thermostat. Programmable, Remote Programming, Learning Assistant support: Amazon Alexa, Google Assistant, Siri.
- Nest Video Doorbells let you answer the door from anywhere using your iOS or Android smartphone.
- Ceiling speakers throughout the house
- Exterior gas line for BBQ grill
- Landscaping underground sprinkler system
- Hot water heater – 75 Gallon
- Electric service – 200 Amp
- Central vacuum
- Ethernet cords in each bedroom, first-floor living space, and basement.
- Smoke and Carbon Monoxide detectors as per code
- Paint – Sherwin Williams interior latex flat with semi-gloss trim.
- 10-year home builders' warranty

Information provided by the builder is deemed reliable but not guaranteed.

The builder reserves the right to make alterations to the plans, features, and elevations at his own discretion



First Floor

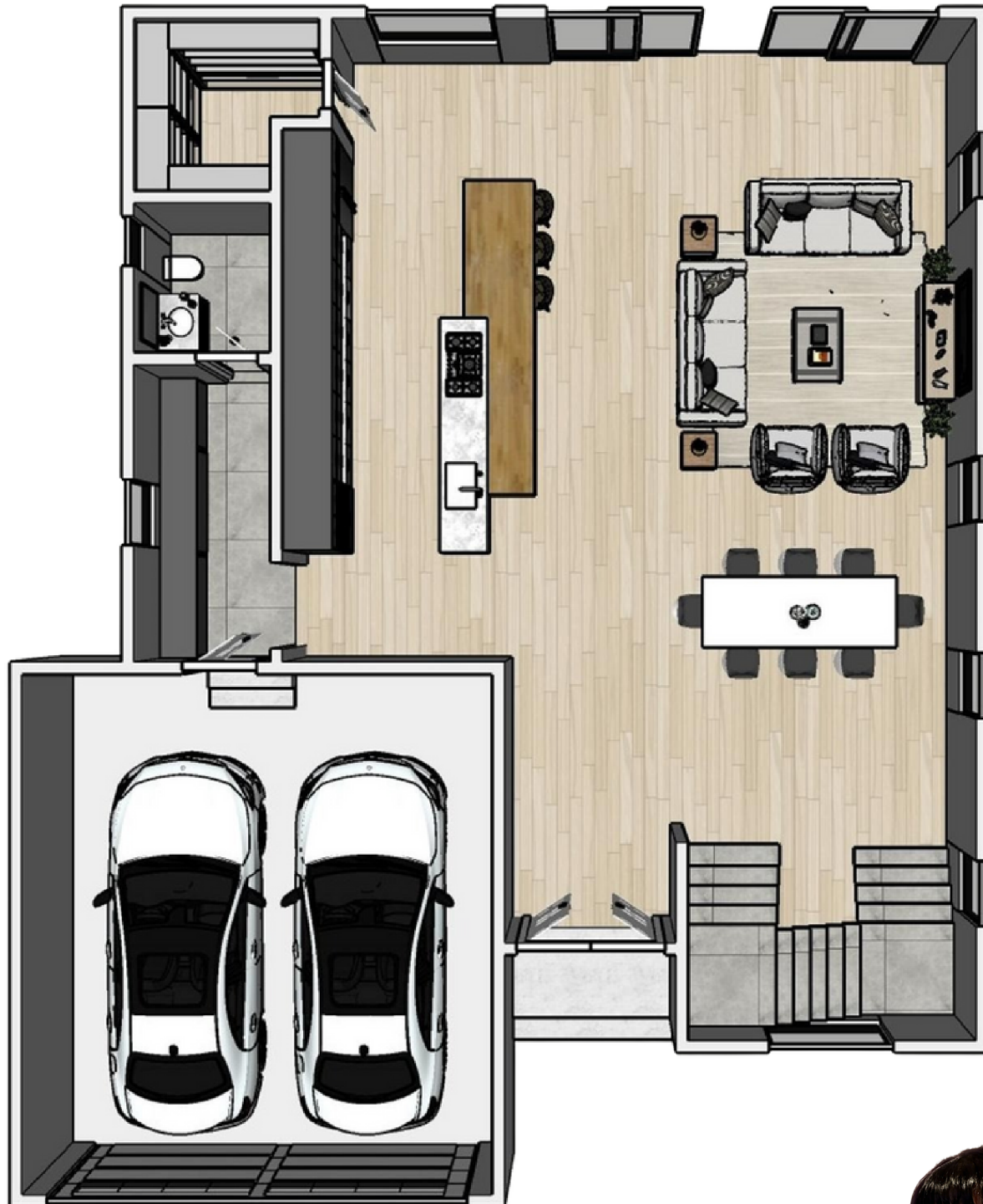
TEAM
EISENBERG

201.341.4765

kw TOWN LIFE
KELLERWILLIAMS, REALTY

KELLERWILLIAMS
Luxury





TEAM
EISENBERG

201.341.4765

KW TOWN LIFE
KELLERWILLIAMS, REALTY

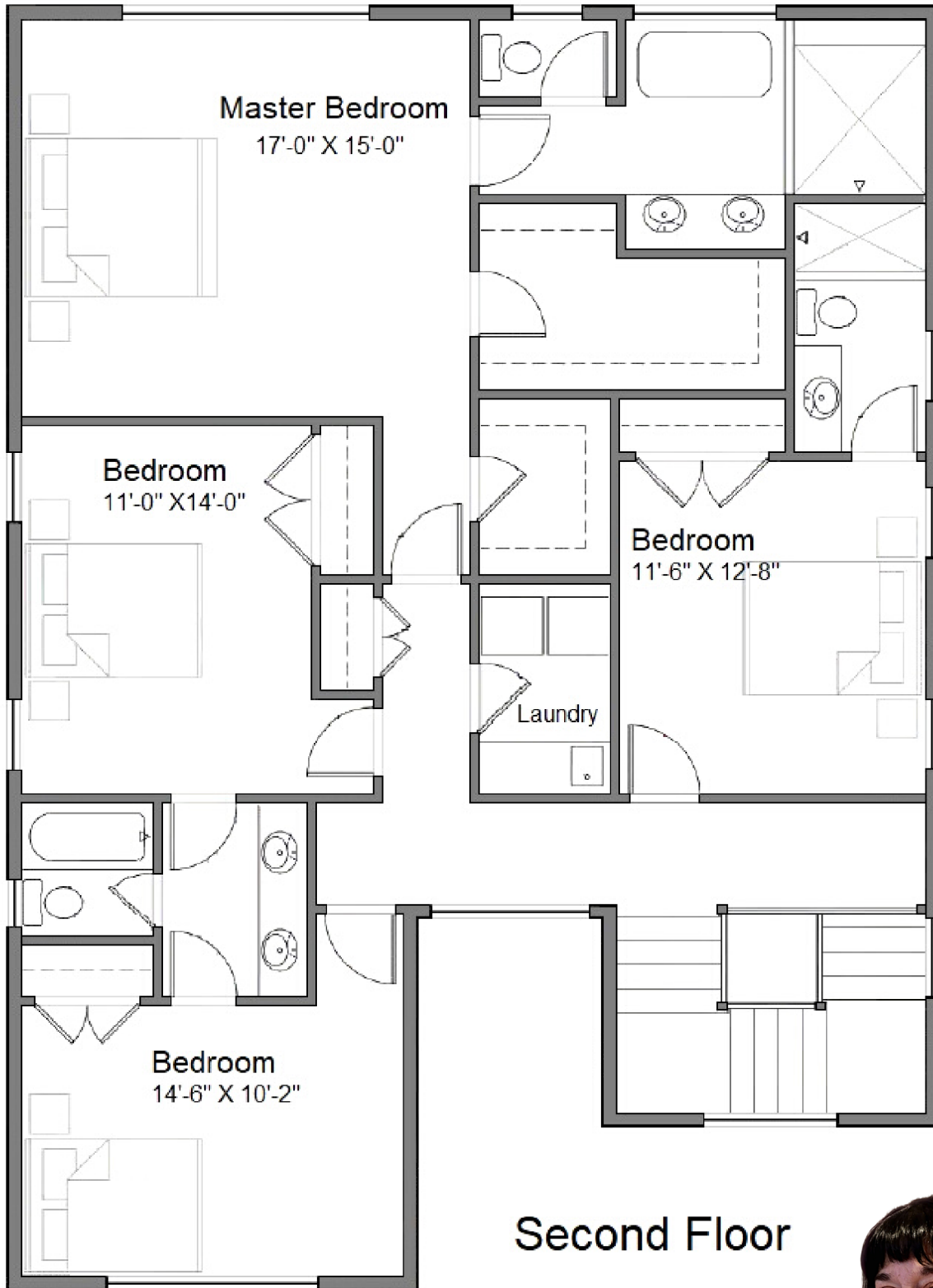
KELLERWILLIAMS
Luxury



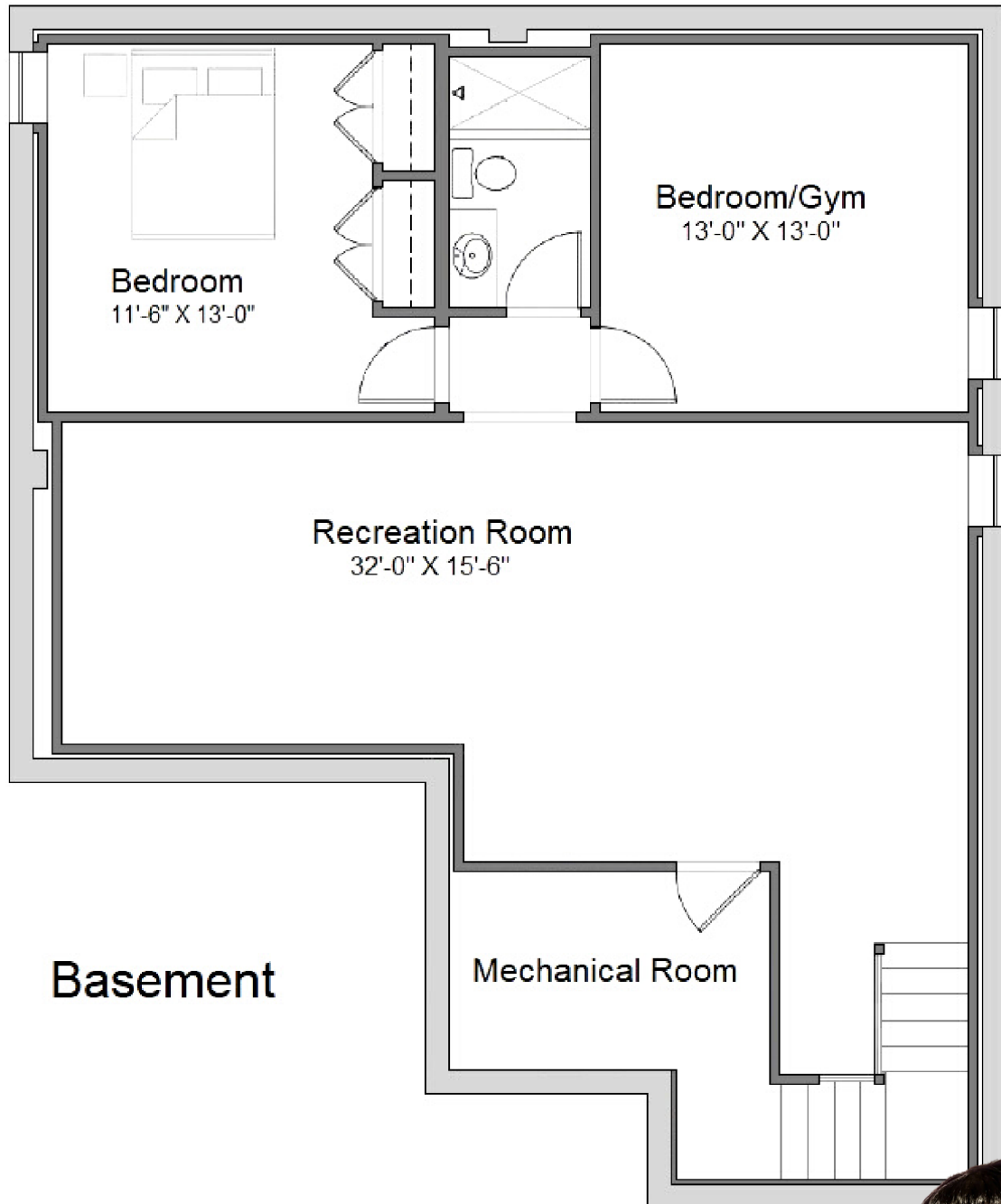
Anat Eisenberg

2

2nd Floor



Second Floor



201.341.4765

KW TOWN LIFE
KELLERWILLIAMS, REALTY

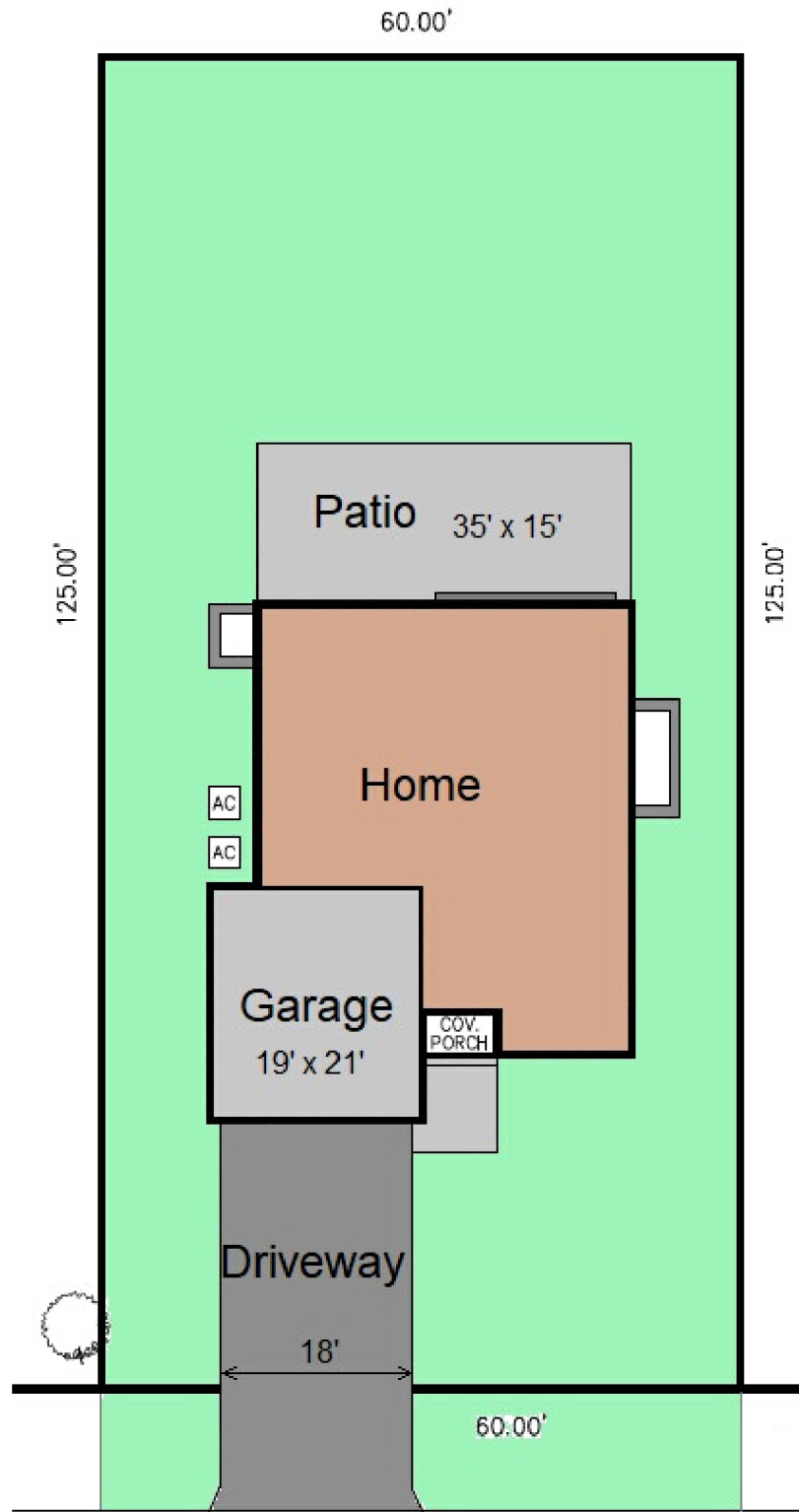
KELLERWILLIAMS
Luxury



Anat Eisenberg

21 Day Avenue | Tenafly NJ

Site Plan



DAY AVENUE

TEAM
EISENBERG

201.341.4765

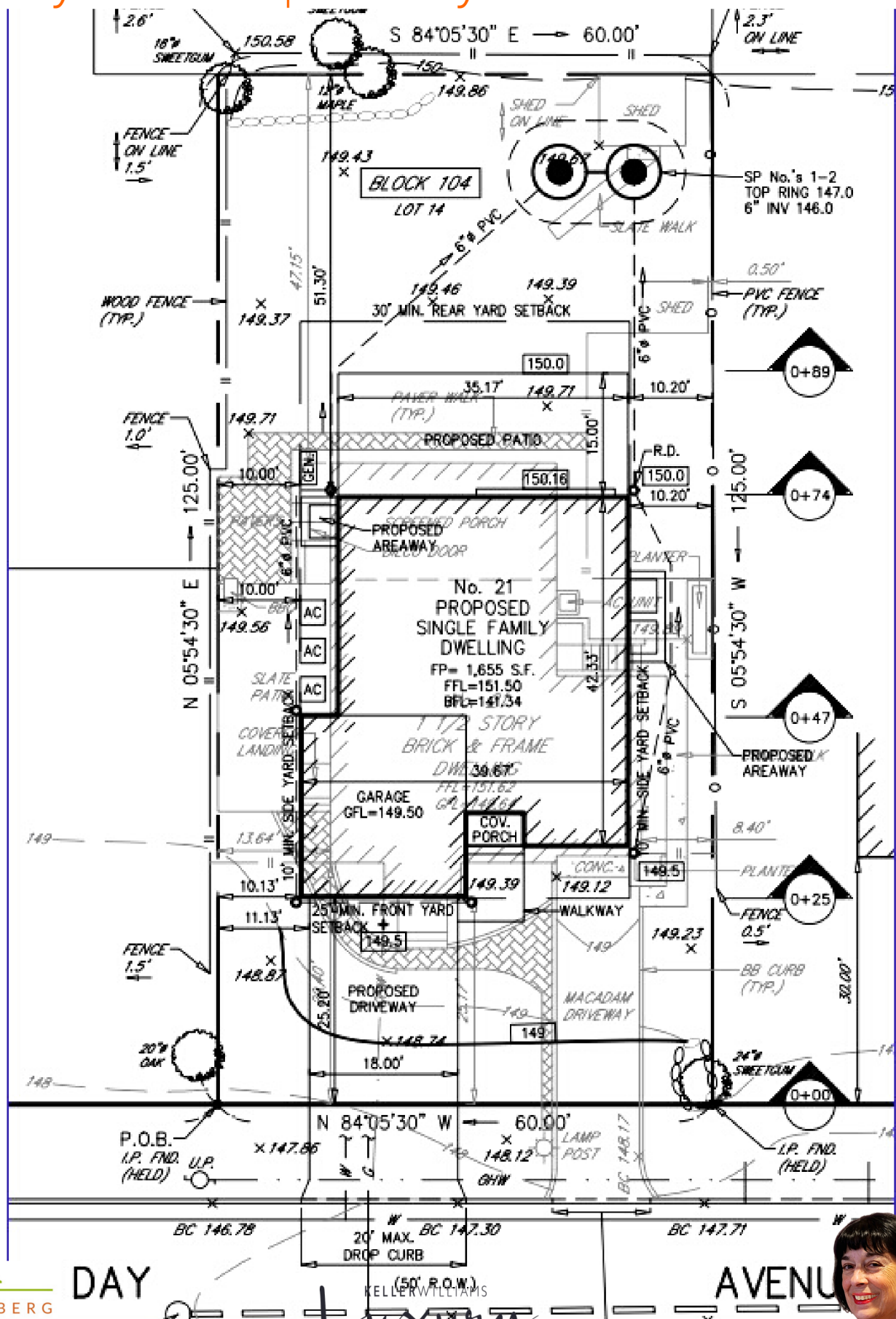
KW TOWN LIFE
KELLERWILLIAMS. REALTY

KELLERWILLIAMS
Luxury



Anat Eisenberg

Site Plan



TEAM
EISENBERG
201.341.4765



Anat Eisenberg